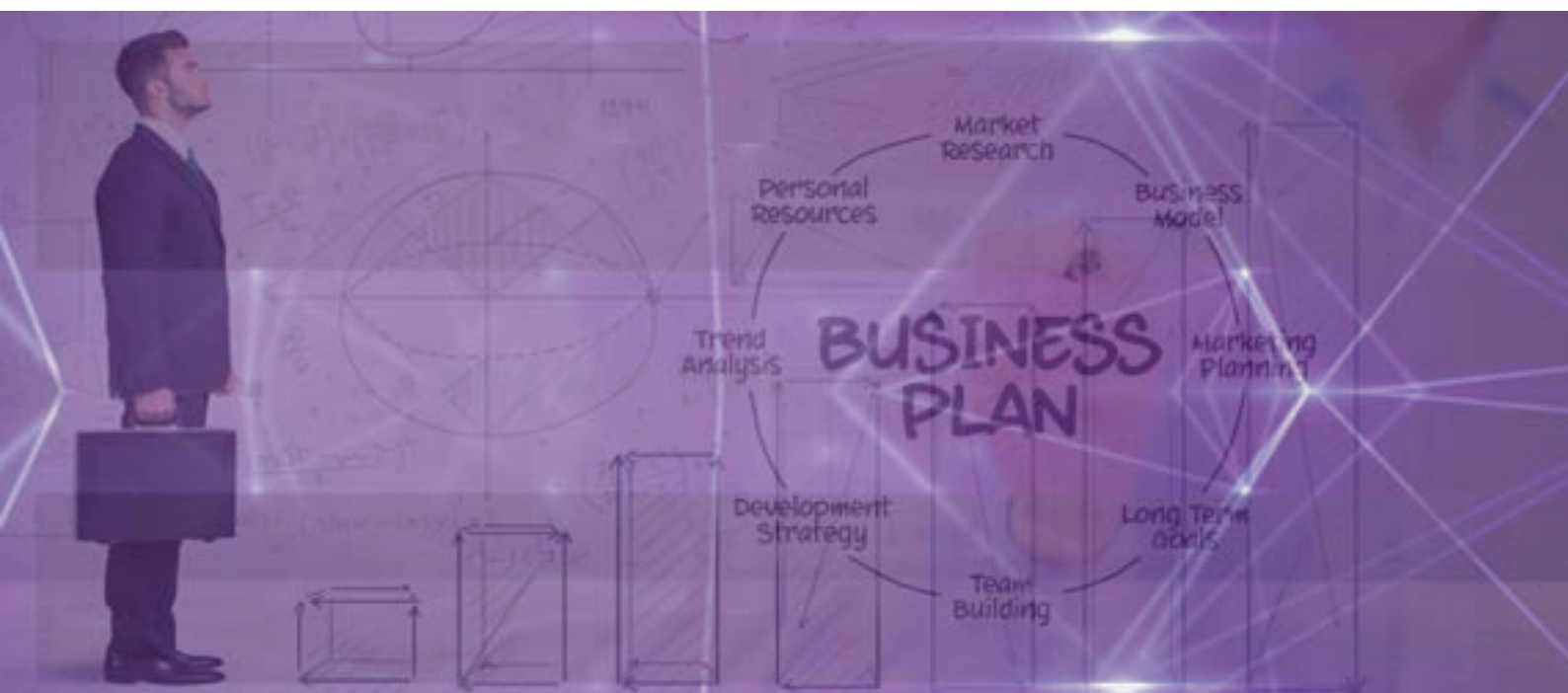


Rising MSU-based Charges?

Our recommendations helped our client make savings of over \$12,500 a month in MSU charges



Background

Our client was paying charges to the vendor by consumed MSUs (Million Service Units) of the WLC (Workload License Charges) * and the charges kept rising as their processing volume increased.

* billing system based on the actual use of CPUs

Systems Team Actions

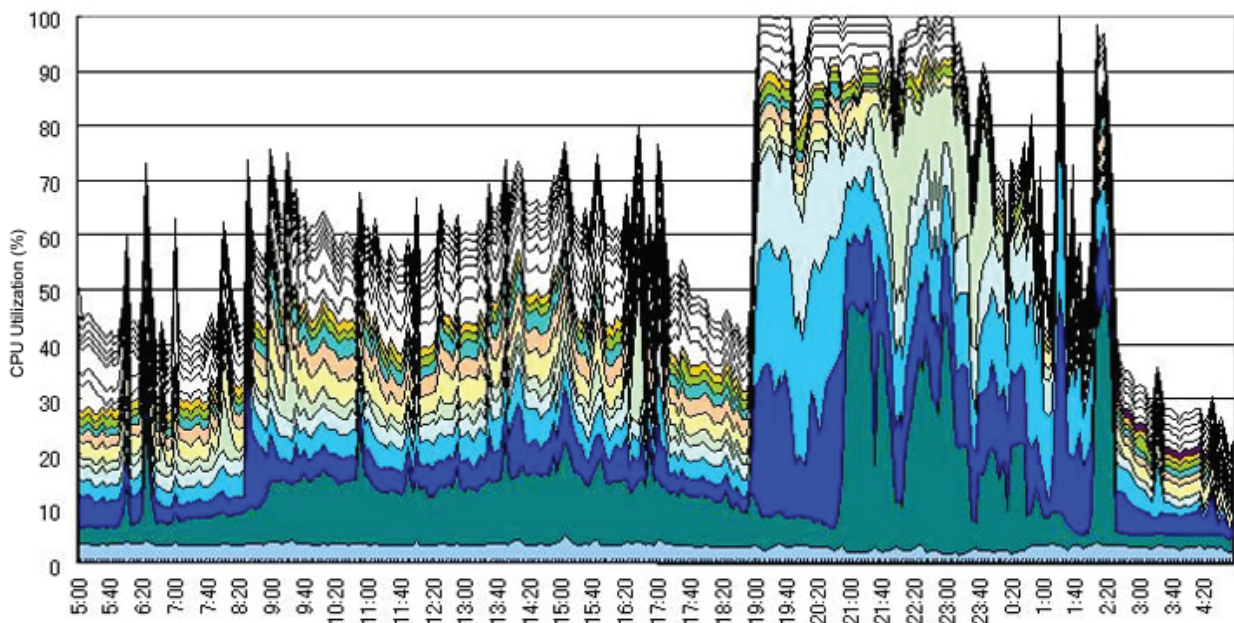
The team called us in for advice. While their management put top priority on cost savings, the system's workload was increasing and they couldn't figure out how they could resolve these two contradictory positions.

Results of Performance Assessment

We used ES/1 NEO to analyze the state of resource usage of 8 production system partitions on peak business days.

The result indicated the presence of phenomena such as page-in and channel path overload in some of the partitions. The biggest problem, however, was high CPU utilization during batch processing time in multiple partitions.

[Processor] Graph of Logical Partitioning Processor Utilization



Graph: State of processor usage

Proposal for Improvement

We advised that consumed MSUs would decrease by specifying the system parameter RMPTTOM. This parameter would reduce OS overhead in each system partition and the optimum setting value was recommended based on our experience from consulting services with other clients.

By taking this approach the following benefits were anticipated:

- OS overhead reduction in peak hours (1-2%)
- Reduction in CPU utilization rates in 4 high-load production partitions (4-8% in total)
- Reduction in CPU time in 4 peak hours (8-16 min.)
- Reduction in consumed MSUs resulting from the decreased CPU time (5-10 MSUs)

System Team's decision

Following the proposal for improvement from us, the client specified the recommended value for the system parameter RMPTTOM.

The team had not tried this parameter before but was happy to undertake the countermeasure because they valued and trusted our expertise.

Results

As a result of the specified parameter our client gained the expected benefits and made a saving of over \$12,500 a month in MSU charges whilst extending the life of their existing CPU.

Needless to say both the team and management were very happy with the outcome.